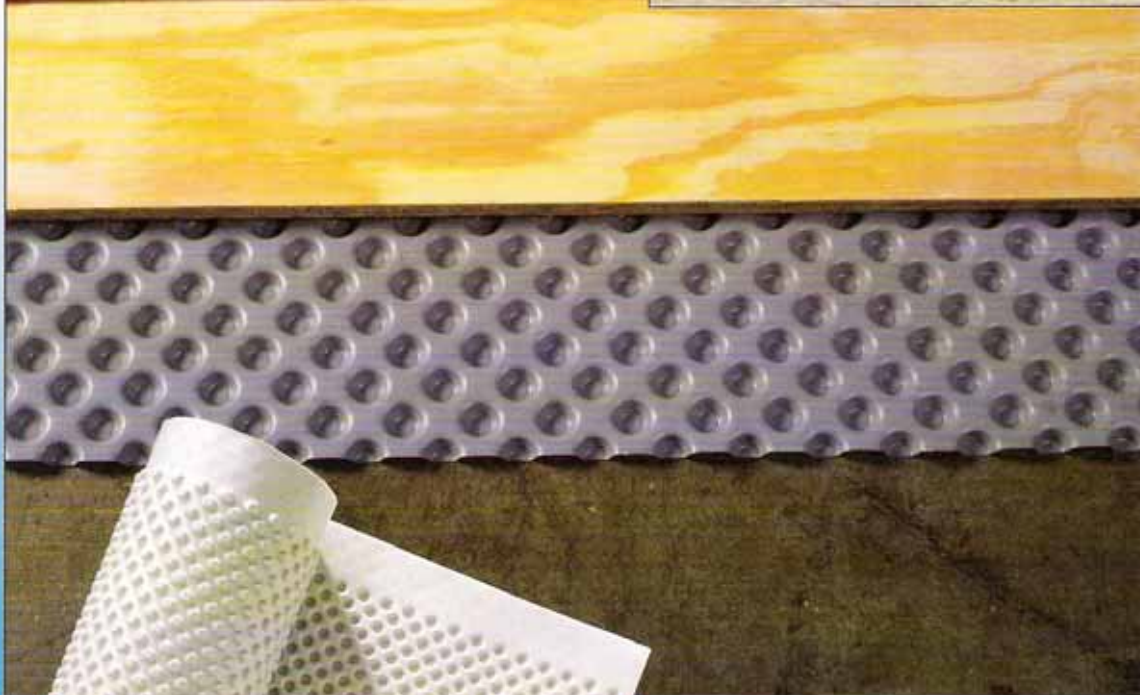


# ThermalDry®

---

## Flooring System

The ThermalDry® Flooring System turns a cold, damp, hard concrete floor into a warm, dry, comfortable floor suitable for carpet or tile\*.



**Basement**  
**Systems**  
Basement Environment Specialists®

See Inside ▶▶▶

# For a dryer, healthier, more comfort



The ThermalDry® waterproof membrane rolls out over your basement floor, creating a moisture barrier between the cold, damp floor and your living area.

Plywood is anchored to the floor over the ThermalDry® membrane by drilling holes and anchoring with special fasteners.



Whether your basement is finished or unfinished, used for storage or living space, the ThermalDry® Flooring System creates a warmer, dryer basement environment.

## A concrete floor is no place to live!

One of the differences between basement space and first floor space is the floor itself. It is the surface we are in contact with most. The floor of the main level of our homes is wood, with air space below it. The floor of our basement is dense, hard concrete. Because it has the cold (55° f) earth below, it is cold and uncomfortable. Further, concrete is porous and allows water vapor from the earth to migrate through. This moisture makes it feel even colder and causes our carpet or other floor covering to rot, promotes the growth of mold

and mildew, and causes the basement to smell bad. It's a problem that must be solved if we are to have comfortable space in our basements.

## The ThermalDry® Solution!

The ThermalDry® Flooring System is a dimpled, high density polyethylene sheet which is installed on the floor, with a plywood deck installed on top of it. The ThermalDry® plastic membrane is totally water and vapor proof. The unique dimpled design creates an air space that insulates the floor. The installation only takes away 3/4" of precious ceiling height in the basement, instead of 4" for other methods of dealing with the problem.

# table walking surface in your home.



*Solving the problem of the cold, damp floor is the most important part of transforming a basement into a new room.*



*Your basement can be turned into valuable living space for you and your family to enjoy.*

***"With the ThermalDry® Flooring System mold and mildew in your carpet is eliminated."***

## **Comfort to the Highest Degree!**

On average a ThermalDry® Flooring System will raise the surface temperature of the floor by 10 degrees! This is because the flooring itself is not in contact with the cold concrete, due to the air space created by the ThermalDry® membrane. The finished floor is warmer, so summertime condensation forming on cold floor surfaces is eliminated.

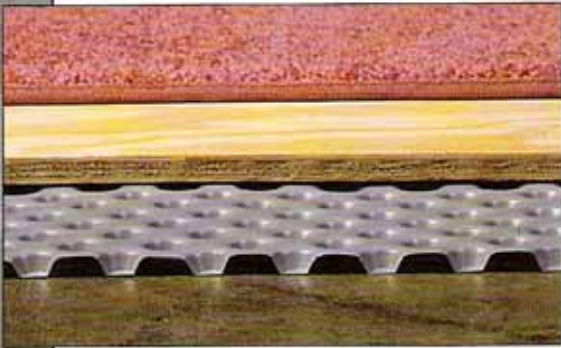
The membrane will never rot, corrode or deteriorate. After the ThermalDry® installation, you can now lay carpet, tile\* or linoleum\* with confidence. The floor will be warmer and dry so you can use the room for a bedroom, playroom, office or recreation!

You don't have to finish your basement to take advantage of the ThermalDry® Flooring System. Many installations have been made for purposes of creating dry comfortable unfinished space!

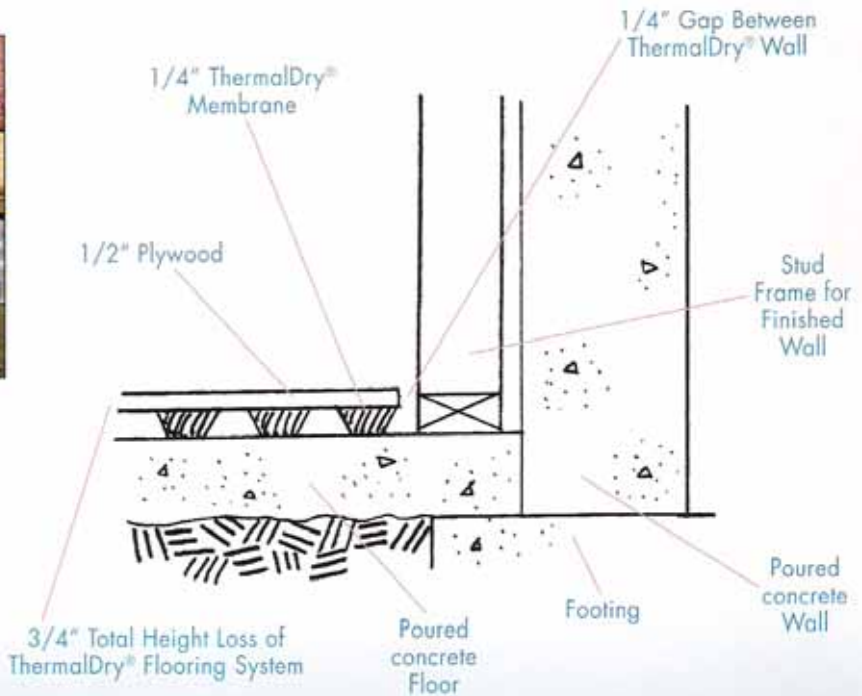
**The ThermalDry® Flooring System provides a more comfortable, healthier, softer walking surface in your home.**

\*If you have a sump pump, it is recommended that an UltraSump® battery back-up system be installed with the ThermalDry® Flooring System. It is also recommended that underlayment be layed over the ThermalDry® Floor for all Linoleum, tile and hardwood flooring installations.

# ThermalDry® Flooring System



With the ThermalDry® Flooring System you can now use your basement with comfort you never dreamed of.



Your basement is valuable space and a significant percentage of the living space in your home. It is a place that can be turned into comfortable living space for far less than building a new addition. The ThermalDry® Flooring System makes it possible.

Talk with one of Basement Systems' representatives about the ThermalDry® Flooring System for your home today!