

PART NO.	LENGTH
PBBW4-8	96.00
PBBW4-9	108.00
PBBW4-10	120.00

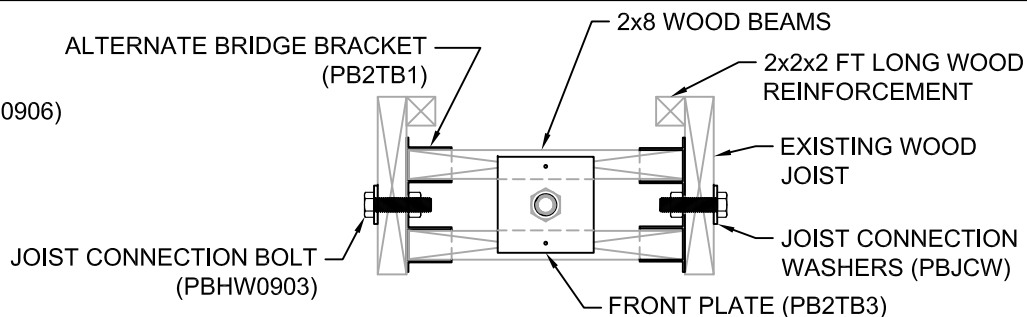
#### NOTES:

#### 1. MINIMUM MATERIAL REQUIREMENTS:

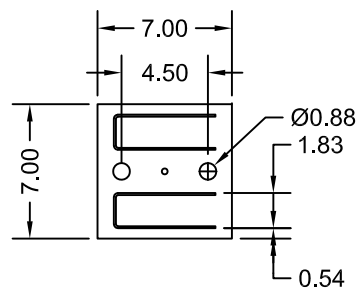
BEAMS -  $F_y = 50$  ksi,  $F_u = 65$  ksi  
 PLATES - ASTM A36  
 BRIDGE BRACKET - ASTM A1011  
 PIPES - ASTM A53

2. ALL WELDING TO BE IN ACCORDANCE WITH AWS D1.1 LATEST ISSUE WITH E70-XX MIN ELECTRODE.

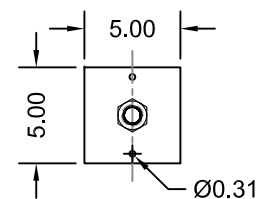
3. THIS DOCUMENT IS MEANT TO SERVE AS A GENERAL DESCRIPTION FOR THE PRODUCTS SHOWN FOR SUBMITTAL PURPOSES. MORE DETAILED MANUFACTURING DRAWINGS ARE AVAILABLE UPON REQUEST.



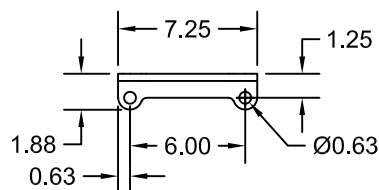
#### ALTERNATE VIEW @ TOP CONNECTION



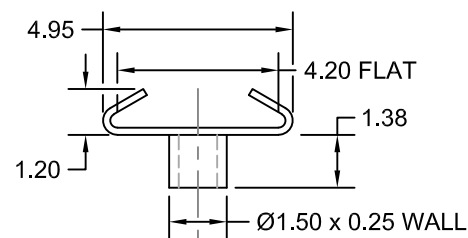
PB2TB1



PB2TB3



EBPBBB



PB2TBW4

All dimensions are in inches and are for reference only.

Scale: NONE  
DO NOT SCALE DRAWING  
© SUPPORTWORKS®, INC.

Foundation  
Supportworks.



11850 Valley Ridge Drive, Papillion, NE 68046  
Phone: 800-281-8545

Date: 04/13/22

Document #: AR-PB2TB1-W4

Title:

Assembly - PowerBrace Alternate Bridge Bracket

Sheet: 1 of 1

Revision: 0