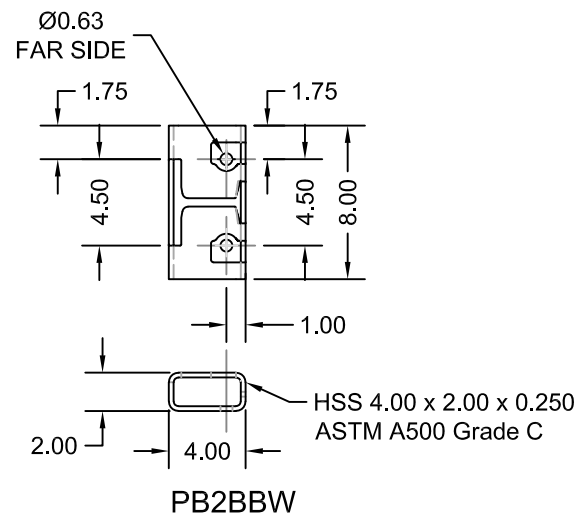
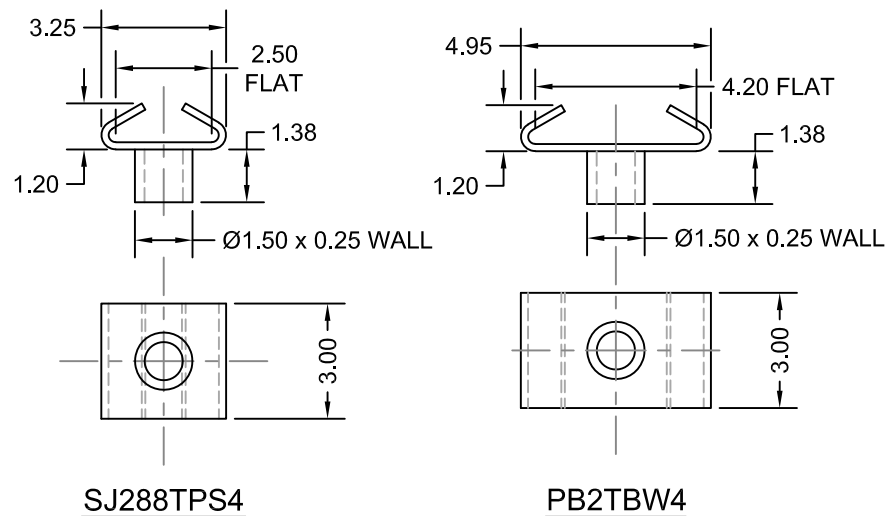


PART NO.	LENGTH
PBB-8	96.00
PBB-9	108.00
PBB-10	120.00
PBBW4-8	96.00
PBBW4-9	108.00
PBBW4-10	120.00



#### NOTES:

#### 1. MINIMUM MATERIAL REQUIREMENTS:

BEAMS -  $F_y = 50$  ksi,  $F_u = 65$  ksi

PLATES - ASTM A36

T-NUT - ASTM A572

PIPES - ASTM A53

2. ALL WELDING TO BE IN ACCORDANCE WITH AWS D1.1 LATEST ISSUE WITH E70-XX MIN ELECTRODE.

3. THIS DOCUMENT IS MEANT TO SERVE AS A GENERAL DESCRIPTION FOR THE PRODUCTS SHOWN FOR SUBMITTAL PURPOSES. MORE DETAILED MANUFACTURING DRAWINGS ARE AVAILABLE UPON REQUEST.

Document #:

**AR-PB2BBW**

Title:

Assembly - PowerBrace Alternate Bottom Bracket

Revision: 3

Date: 04/13/22


Sheet: 1 of 1

All dimensions are in inches and are for reference only.

Scale: NONE

DO NOT SCALE DRAWING

© SUPPORTWORKS®, INC.



**Foundation Supportworks.**

11850 Valley Ridge Drive, Papillion, NE 68046

Phone: 800-281-8545